

Dock Instruction Manual

Acquired technical standards conformity approval based on the Telecommunications Business Act

Thank you for your purchase of this dock (below, "dock" or "product").

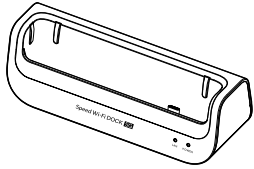
Before use, ensure that you read this "Instruction Manual" and use the product correctly.

After reading, store this manual in a safe location and refer to it as necessary. Ensure that you follow any warnings or cautions indicated on the product.

- * This product is designed specifically for charging and connecting to a network with the Speed Wi-Fi DOCK 5G 01 mobile router (below, "Speed Wi-Fi main unit"). Do not use it for any other purpose.
- * For specific devices that can be used with this product, refer to the "Instruction Manual" of the Speed Wi-Fi main unit. Furthermore, for the latest information, contact your contracted telecommunications carrier.
- * The "保証書" (Warranty) (Japanese) is available in the included "ドック 取扱説明書" (Dock Instruction Manual).

Components

- Dock (CPS01PUA/CPS01PUU) unit



- ドック 取扱説明書(保証書) "Dock Instruction Manual (Warranty)" (Japanese)

- * Charging equipment, USB cable, and Ethernet cable are not included.
- * This product is not waterproof, dustproof, or shockproof.

When Using the Product

- The Company is not liable for any damages or lost income arising from earthquakes, lightning, storms, floods or other natural disasters, as well as fires, actions by third parties, other accidents, intentional or mistaken operation by the customer, or use under other unusual conditions outside the responsibility of the Company.
- The Company is not liable for any incidental damages (change/disappearance of recorded content, loss of business income, disruption of business, etc.) arising from the use of or inability to use the product.
- The Company is not liable for any damages or lost income arising from failure to observe the recorded content of the "Instruction Manual".
- The Company is not liable for any damages or lost income arising, for example, from malfunction caused by combination with connected devices or software not related to the Company.
- * The term "the Company", as used in this manual, indicates the telecommunications carrier to whom you are contracted and the manufacturer (CPSpeed CO.,LTD.).

Safety Precautions (Observe Strictly)

- Before using this product, thoroughly read these Safety Precautions (Observe Strictly) for proper use.
- The safety precautions shown here contain information to prevent damage to property and/or injury to the user or other people and must be observed.
- The symbols in the following categories indicate the level of damage or injury that may occur due to incorrect usage or if the information provided is not observed.

	DANGER	This symbol indicates the potential and imminent danger of death or serious injury ^{(*)1} to a person from improper use.
	WARNING	This symbol indicates the possibility of death or serious injury ^{(*)1} to a person from improper use.
	CAUTION	This symbol indicates the possibility of minor injury ^{(*)2} to a person or physical damage ^{(*)3} to a person from improper use.

*1 Serious injury: This refers to loss of sight, injury, burns (high- and low-temperature), electric shock, broken bones, injuries with residual aftereffects from poisoning, etc., and injuries requiring hospital admission for treatment or long-term hospital attendance as an outpatient.

*2 Minor injury: This refers to injuries, burns (high- and low-temperature), electric shock, etc. that do not require hospital admission for treatment or long-term hospital attendance as an outpatient.

*3 Physical damage: This refers to extended damage to buildings, furniture, livestock, or pets, etc.

Explanation of icons used in this manual that indicate prohibitions and restrictions

	Indicates an action that is not allowed.		Indicates that handling with wet hands is not allowed.
	Indicates that disassembly is not allowed.		Indicates restrictions on actions according to instructions (actions that must be done).
	Indicates that use in a place where the product is likely to get wet or allowing the product to get wet is not allowed.		Indicates that the power plug must be removed from the power outlet.

DANGER

- Do not use, store, or leave the product in locations subject to high temperatures or accumulation of heat (e.g. by the fire, near a heater, under a heated kotatsu or bedding, in direct sunlight, or in a car in the hot sun). Doing so might cause fire, burns, injury or electric shock.
- Do not put the product in or near microwave ovens, cooking appliances, such as IH cooking heaters, or high pressure containers, such as pressure cookers. Doing so might cause fire, burns, injury or electric shock.
- Do not let water or other liquids (drinking water, sweat, seawater, urine of pets, etc.) enter or dampen the connection terminal. Also, do not charge while damp, or in locations where the product may come into contact with water, such as in bathrooms or near humidifiers. Doing so might cause fire, burns, injury or electric shock.
- Do not heat the product or throw it into a fire. Doing so might cause fire, burns or injury.
- Do not disassemble or modify the product. Doing so might cause fire, burns, injury or electric shock.
- Use only optional accessories specified by the Company. Using accessories that are not specified, or whose manufacturer, reseller, or specifications are unknown, might cause fire, burns, injury or electric shock.
- This dock is only for use with the Speed Wi-Fi DOCK 5G 01, and cannot be used with other models. If other than the dedicated dock is used, there is the risk that it will not operate properly, and it might cause problems such as overheating, fire, rupture, malfunction, or leakage. Therefore, ensure that you use the dedicated dock.

WARNING

- Do not subject the product to strong force, impacts, or vibration, such as letting it fall, stepping on it, or throwing it. Doing so might cause fire, burns, injury or electric shock.
- Do not allow conductive foreign objects (metal fragments, pencil lead, etc.) to come into contact with the connection terminal, and ensure that dust, sand, and other matter are kept out. Doing so might cause fire, burns, injury or electric shock. If foreign objects somehow get into the product, contact your contracted telecommunications carrier.
- Do not use the specified charging equipment (sold separately) or the USB cable (commercially available) if their cables become damaged. Doing so might cause fire, burns, or electric shock.
- Do not use the specified charging equipment (sold separately), this product, or the USB cable (commercially available) in humid locations such as bathrooms. Doing so might cause fire, burns, injury or electric shock.
- If you hear thunder, do not touch the specified charging equipment (sold separately) or USB cable (commercially available). Doing so might cause an electric shock.
- Do not short-circuit the connection terminal while the specified charging equipment (sold separately) that is connected to the product is connected to a power outlet. Also, do not touch the connection terminals with your finger, hand, or any other part of your body. Doing so might cause fire, burns, or electric shock.
- Do not place heavy objects on the cables of the specified charging equipment (sold separately) or USB cable (commercially available), and do not apply excessive force to the cables, such as by pulling them. Doing so might cause fire, burns, or electric shock.
- When you insert or remove the specified charging equipment (sold separately) to or from a power outlet, do not contact metal straps or other metal objects with the specified charging equipment. Doing so might cause fire, burns, or electric shock.
- Do not use a voltage converter (such as converters used for overseas travel) with the specified charging equipment (sold separately). Doing so might cause fire, overheating, or electric shock.
- Do not apply excessive force to the connection part with the specified charging equipment (sold separately) connected to the product. Doing so might cause fire, burns, injury or electric shock.
- Do not touch the cable of the specified charging equipment (sold separately) or USB cable (commercially available), the connection terminal, the power plugs, or the dock with wet hands. Doing so might cause fire, burns, or electric shock.
- If charging does not finish after the specified time, stop charging. Failure to do so might cause fire, burns, injury etc. due to overcharging etc.
- Turn off the Speed Wi-Fi main unit before entering a place where flammable gas may be present, or a place where dust is generated. Stop charging the battery if you are doing so. The flammable gas, etc. could ignite and cause an explosion, fire, etc.
- Regarding use in a gas station, etc., follow the instructions of those specific facilities. Do not charge the product in a gas station, etc. Also, if the product is used in a gas station, etc., be careful to not drop it, do not use it while refueling in particular. The flammable gas, etc. could ignite and cause an explosion, fire, etc.
- If you notice anything unusual about the product, such as an unusual odor, abnormal noise, smoke generation, overheating, discoloration or deformation during operation, charging or storage, perform the following measures with care and caution.
 - Remove the specified charging equipment's (sold separately) plug from the power outlet.
 - Turn the Speed Wi-Fi main unit off.Failure to do so might cause fire, burns, injury, or electric shock. If you notice anything unusual about the product, such as an unusual odor, abnormal noise, smoke generation, overheating, discoloration or deformation, please contact the telecommunications carrier to whom you are subscribed.

- Be careful not to let the product be bitten by your pet. Fire, burns, or injury might occur if the internal battery ignites, ruptures, overheats, or leaks fluid.
- Use the specified power supply and voltage. Also, use charging equipment (commercially available) that can be used overseas to charge the product while overseas. Using the wrong power supply or voltage might cause fire, burns, or electric shock. Specified charging equipment (sold separately): 100 VAC (connect only to a household AC power outlet) Charging equipment (commercially available) that can be used overseas: 100 - 240 VAC (connect only to a household AC power outlet)
- Wipe away any dust that is on the specified charging equipment (sold separately) power plug or connection terminal. Using it while it is dusty might cause fire, burns, or electric shock.
- When you connect the specified charging equipment (sold separately) to a power outlet, insert it firmly. Insecure inserting might cause fire, burns, or electric shock.
- When you remove the power plug from the power outlet, do not apply excessive force to pull on the cable of the specified charging equipment (sold separately). Hold the specified charging equipment (sold separately) to pull it out. Pulling on the cable of the specified charging equipment (sold separately) might damage the cable and cause fire, burns, or electric shock.
- When you insert or remove the specified charging equipment (sold separately) or USB cable (commercially available) into/from the product, insert or remove them straight into/from the connection terminal without applying excessive force, such as by pulling on their cables. Removing these incorrectly might cause fire, burns, injury or electric shock.
- If the connection terminal is deformed such as being bent etc., stop using it immediately. Do not use them with the deformation restored. Doing so might short-circuit the connection terminal or cause fire, burns, injury or electric shock.
- When not using the product, remove the specified charging equipment (sold separately) power plug from the power outlet. Beware that leaving the power plug plugged in might cause accidents such as overheating, fire, burns, or electric shock in the event of unexpected circumstances such as an earthquake or water leak.
- Immediately remove the power plug for the specified charging equipment (sold separately) from the power outlet if any liquid, such as water (drinking water, sweat, seawater, urine of pet animals, etc.) gets on it. Whatever gets on it may cause a short-circuit resulting in a fire, burns, or electric shock.
- Remove the power plug of the specified charging equipment (sold separately) from the power outlet when cleaning. Failure to do so might cause fire, burns or electric shock.
- Follow the instructions of medical institutions regarding the use of mobile devices on their premises. The radio waves may adversely affect electronic devices or electronic medical equipment.

CAUTION

- Do not use the product while it is damaged. Doing so might cause fire, burns or injury.
- Do not place the product on an unstable or inclined platform. Doing so might cause the product to fall etc. and cause injury.
- Do not use or keep the product in a place that is very humid, dusty, or subject to high temperatures. Doing so might cause fire, burns, or electric shock.
- If children use the product, parents or guardians should give them proper instructions and do not allow them to use the product in the wrong way. Failure to do so might result in accidental ingestion, injury, or electric shock.
- Keep the product out of the reach of babies and infants, and keep it away from pets. Failure to do so might result in accidental ingestion, injury, or electric shock.
- Do not touch the specified charging equipment (sold separately) continuously while it is connected to the power outlet. Doing so might cause burns.
- Be careful, the product may become very warm when it is used continuously or being charged. The Speed Wi-Fi main unit, internal battery, and specified charging equipment (sold separately) might become warm when used continuously, such as to transmit data, or while charging. If you are directly in contact with a warmed part for a long time, it might cause a redness of skin, itch, rash, low-temperature burn etc. depending on your physical condition.
- If skin problems develop from using the product, immediately stop using it and consult a doctor. Itching, rashes, eczema, or other symptoms could occur depending on the user's physical condition.

<Material list>

Location used	Material	Surface treatment
External case	PC resin + ABS resin	
Ethernet port	Nylon, copper	Nickel plating
Dock port	Stainless steel	Nickel plating
LED light	PC resin	
Cushioning on front cover	TPU resin	
Rubber pad on rear cover	Silicone	

Handling Precautions

These precautions are provided to prevent a fault and ensure that performance can be fully demonstrated. Thoroughly read these precautions to ensure correct use.

- Do not apply excessive force to the product during use. Be sure not to put the product into a tightly packed bag or place a heavy object on the product in a bag.
- Do not use the product in extremely hot, cold or humid places. (Use within an ambient temperature range of 5°C to 35°C and humidity range of 35% to 85%.)
- Repeatedly inserting and removing the Speed Wi-Fi main unit to and from the product in succession might cause a malfunction.
- Do not use in places subject to lots of dust or vibration. Doing so might cause a malfunction.
- Clean the connection terminal with dry cotton swabs, etc. every now and then. Soiled terminals might cause poor connection. Do not apply strong force when cleaning the connection terminal to prevent deformation.
- Clean the product with a soft dry cloth (such as the type used for eyeglasses). Wiping the display with alcohol, thinner, benzene, detergent, etc., may also erase the printing on the outer casing or cause failures.
- Wiping the display with disinfectant, antibacterial sheets, etc., may change colors, cause deformation, or erase the printing on the outer casing. Also, if disinfectant is used near the product, the disinfectant may get inside the product and cause a malfunction.
- Use as far away as possible from landline phones, TVs and radios. Use nearby might affect them.
- This product and the Speed Wi-Fi main unit might become warm during use, such as when transmitting data or while charging. This is not a malfunction.
- If the Speed Wi-Fi main unit becomes warm when using it, the power might turn off automatically because of a protection feature. In that case, turn on the power to connect again after a while.
- When attaching the Speed Wi-Fi main unit to this product, do not push hard or apply excessive force. Doing so may result in damage to, or bad connection with the Speed Wi-Fi main unit and this product.
- Charging of the Speed Wi-Fi main unit is possible with the display showing or during communications. However, charging time will increase slightly.
- Do not place near corrosive chemicals or in places where corrosive gas is generated. Doing so might cause a malfunction.
- Be sure to use only specified peripheral devices. Use of other peripheral devices might cause a malfunction.
- Do not put the product in a cooking apparatus, such as a microwave oven or a pressure vessel. Doing so might cause a malfunction.
- The customer is not allowed to disassemble, modify or repair the product. Doing so might cause a malfunction. Furthermore, use after customer disassembly, modification or repair of this product is in violation of the Telecommunications Business Act.
- Do not allow a part of your body such as fingers or conductive foreign objects (metal fragments, pencil leads, etc.) to come into contact with or get inside of the connection terminal to avoid short-circuit. Doing so might cause a malfunction.
- Do not splash liquid such as water on the product. Also, never use in humid places such as bath areas, or use with wet hands. Doing so might cause a malfunction due to short-circuit or corrosion of electronic circuits.
- Malfunctions caused by wetting with water or humidity are not covered by the warranty and charges will be incurred for repairs.
- In the event that the product gets wet while charging, immediately remove the power plug of the specified charging equipment (sold separately).
- Do not use the product if you hear thunder outside while charging. Doing so might risk lightning strikes and electric shock.
- Using or charging the product in a bag or while it is covered with bedding might cause a malfunction.
- When using the specified charging equipment (sold separately) or an external device, insert/remove the connector straight to/from the terminal. Make sure of the orientation of the connector is correct. Unless it's correct, it might cause a malfunction.
- Do not store the product in places subject to direct sunlight (e.g. in a car), places that get hot, places that get extremely cold, and in humid or dusty places. Doing so might cause a malfunction.
- Do not place the product on an unstable or inclined platform. Be especially careful while the product is charging. Dropping the product might cause a malfunction.
- Do not exceed the rating of a power outlet or wiring device when charging the product, for example, by starburst connection etc.
- Never use the product if it has been modified. Use of modified equipment is in violation of the Telecommunications Business Act. This product has received technical standards conformity approval for terminal equipment based on the Telecommunications Business Act; as proof of this, the "Technical Conformity Mark" is displayed on the product unit nameplate sticker, so do not remove it. Removing screws on the unit and modifying the interior of the product will render this technical standards conformity approval no longer valid. Use of this product without valid technical standards conformity approval is in violation of the Telecommunications Business Act, so ensure that the product is not used in this state.
- Do not drop, throw, step on, or otherwise subject the product to strong impacts. Doing so might cause damage.
- Do not wrap the specified charging equipment (sold separately) power cord around the adapter. Also, do not excessively bend the specified charging equipment (sold separately) power plug or the connecting section between the connector and the power cord. Do not place heavy objects on the specified charging equipment or USB cable cords, or apply excessive force such as by pulling them. Doing so might cause damage.
- When removing the specified charging equipment (sold separately) power plug from the power outlet, pull by holding onto the power plug. Pulling on the cable might damage it.
- Do not use this product inside a car. If it falls or obstructs driving, this may cause an accident. Use of the product presumes use in a stable, indoor location.

This device is a class B device. This device is intended for use in domestic environments, but it may interfere with reception if it is used near a radio or television receiver. Read the instruction manual to use the device correctly.

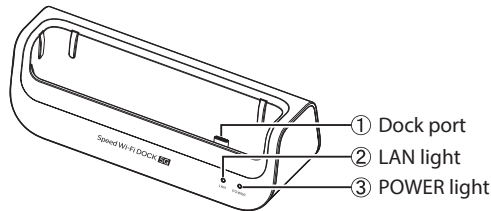
VCCI-B

Dock Capabilities

- The specified charging equipment (sold separately) can be used to charge the Speed Wi-Fi main unit.
- The product can be connected to a PC with a wired LAN.
- The product can be connected to devices compatible with wireless LAN, such as PCs and smartphones, using wireless LAN (Wi-Fi). Connecting to the dock enables a more secure connection to the Internet.
- Connect to a wide-area network (WAN) through the Speed Wi-Fi main unit, using the Speed Wi-Fi main unit as a router.
- When the Speed Wi-Fi main unit is set to the bridge mode, router functionality is disabled, and the dock can be used as a wired LAN connection bridge.
- When the Speed Wi-Fi main unit is connected via the dock to the wired LAN port of a broadband router and thus to the Internet, the Speed Wi-Fi main unit can be used as a Wi-Fi access point. (In these cases, connecting to the dock will stop the Speed Wi-Fi main unit router functionality, and connection to the WAN will not be possible.)

Part Names and Functions

Front



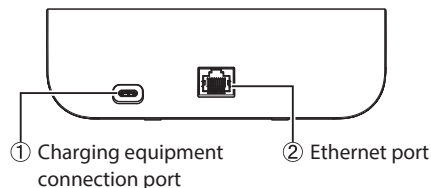
Name	Explanation
① Dock port	Connect (set) the Speed Wi-Fi main unit.

(Light display)

Light type	Color	Status	Explanation
② LAN light (Wired LAN communication status display)	Green	Lit	When the Ethernet port link is established
	Green	Flashing	When the Ethernet port is sending/receiving data
	-	Off	When the Ethernet port link is not established
③ POWER light (Power supply)	Green	Lit	When the specified charging equipment (sold separately) is connected, and is supplying power
	-	Off	When the specified charging equipment (sold separately) is not connected

* Note that if the Speed Wi-Fi main unit is set on the product while the Speed Wi-Fi main unit is set to Wi-Fi automatic off or powered off, the LAN light may light up or flash, but data cannot be sent or received in this state.

Rear



Name	Explanation
① Charging equipment connection port	Connect to the charging equipment (sold separately).
② Ethernet port	Connect to a PC or other device using an Ethernet cable (LAN cable) (commercially available).

Connections

CAUTION

- When using this product, ensure that you connect the specified charging equipment (sold separately).
- Use the specified charging equipment (sold separately). It is recommended that you use the Type-C Common AC adapter 02 (0602PQA) (sold separately) or Type-C Common AC adapter 02U (0602PQV) (sold separately).
- The charging equipment connection port of this product does not support USB communications. It is a connection port for power supply.
- When connecting an Ethernet cable (commercially available) to this product, insert until a click is heard from the Ethernet port, then pull the cable lightly to ensure that it is locked in place.

Charging the Speed Wi-Fi main unit

This section explains how to perform charging using the Type-C™ Common AC adapter 02 (0602PQA) (sold separately) (below, "AC adapter").

- 1 Connect the USB connector (Type-C) on the AC adapter (sold separately) to the charging equipment connection port on the dock, and the AC adapter (sold separately) power plug to the power outlet.

* Connect the USB connector at the same angle as the charging equipment connection port.

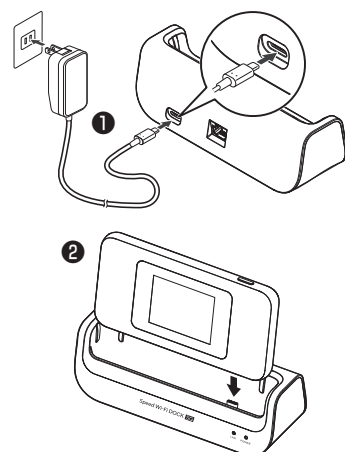
- 2 Set the Speed Wi-Fi main unit on the dock.

* Align the dock port on the dock with the USB port on the Speed Wi-Fi main unit, and insert straight in until it is securely set. The POWER light will light up.

* To check the charging status (remaining battery level), press the power button on the Speed Wi-Fi main unit. The percentage will be shown on the display. (The remaining battery level display is an estimate only. It will vary depending on the Speed Wi-Fi main unit usage environment and conditions.)

For details on the charging time, refer to the "取扱説明書 詳細版 (Full Instruction Manual)" (Japanese) of the Speed Wi-Fi main unit.

* To remove the Speed Wi-Fi main unit from the dock, hold the dock with one hand and pull the Speed Wi-Fi main unit straight up out of the dock port.

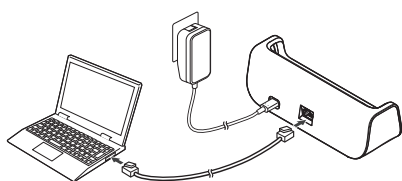


When connecting a PC or other device via wired LAN

The Speed Wi-Fi main unit is set to the "Router Mode" as the factory default operation mode. The following explains how to connect to a PC via a wired LAN in the factory default state.

* Wired LAN communications are not possible unless the specified charging equipment (sold separately) is used to supply power.

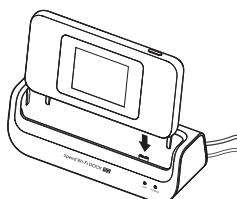
- 1 Referring to the procedure in "Charging the Speed Wi-Fi main unit", connect the AC adapter (sold separately) to the dock, and the AC adapter (sold separately) power plug to the power outlet.
- 2 Connect the Ethernet ports on the dock and on the PC using an Ethernet cable (commercially available).



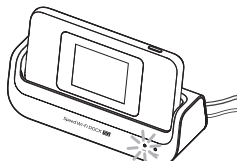
- 3 Turn on the Speed Wi-Fi main unit power.

- 4 Set the Speed Wi-Fi main unit on the dock.

* Align the dock port on the dock with the USB port on the Speed Wi-Fi main unit, and insert straight in until it is securely set.



- 5 Confirm that the LAN light is lit or flashing in green.



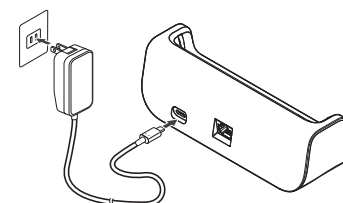
* If the LAN light is not lit or flashing in green, set the Speed Wi-Fi main unit on the dock again.

Using a broadband router and wired LAN connection to create a wireless LAN access point

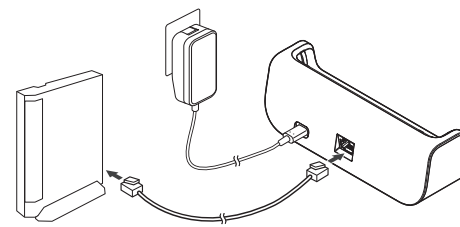
The Speed Wi-Fi main unit is set to the "Router Mode" as the factory default operation mode. However, connecting the Speed Wi-Fi main unit to a broadband router using an Ethernet cable (commercially available) through the Ethernet port on the dock will switch it automatically to the "Access Point Mode".

The following explains the procedure for switching to the Access Point Mode.

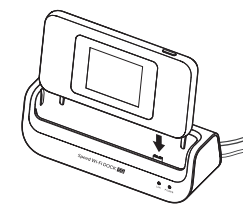
- 1 Connect the AC adapter (sold separately) to the dock, and the AC adapter (sold separately) power plug to the power outlet.



- 2 Connect the Ethernet ports on the broadband router and on the dock using an Ethernet cable (commercially available).



- 3 Turn on the Speed Wi-Fi main unit power, and set it on the dock.



- 4 Connect the PC or other device to the wireless LAN (Wi-Fi).

* For details on connecting to the wireless LAN (Wi-Fi), refer to "3-1 無線LAN(Wi-Fi®)で接続する (3-1 Connecting to Wireless LAN (Wi-Fi))" in the "取扱説明書 詳細版 (Full Instruction Manual)" (Japanese) of the Speed Wi-Fi main unit.

Troubleshooting

I cannot connect to the Internet.

- Check that the Speed Wi-Fi main unit is turned on.

The LAN light does not light up or flash.

- Check that the Ethernet cable (commercially available) is connected correctly.
- Check that the specified charging equipment (sold separately) is connected.
- Set the Speed Wi-Fi main unit on the product again.

After setting the Speed Wi-Fi main unit on the product, it does not operate correctly.

- When using this product, ensure that you connect the specified charging equipment (sold separately).
- Remove the Speed Wi-Fi main unit from the product, confirm that the Home screen is displayed, and then set it on the product again.

After-Sales Service

Performance-critical parts for repairs

We will retain performance-critical parts for repairs of the dock unit for four years after the cessation of its production. Performance-critical parts for repairs are those parts necessary to maintain functionality of the product.

Warranty (Japanese)

Ensure that the warranty is properly filled out at the store of purchase with details such as the "Store name" and "Date of purchase". Read the warranty terms carefully and keep the warranty in a safe location.

After-Sales Service

Contact your contracted WiMAX provider.

Main Specifications

Item	Specifications and functions		Remarks
Ethernet port ⁽¹⁾	Physical interface	8-pin modular jack (RJ-45) x 1 port	Maximum connections: 1
	Interface	1000BASE-T/100BASE-TX	
	Communications speed	1000 Mbps/100 Mbps	
	Full-duplex/Half-duplex	Full-duplex/Half-duplex	
Charging equipment connection port	Physical interface	USB connector (Type-C) (socket) x 1 port	Does not support USB communications.
Dock port (Interface with the Speed Wi-Fi main unit)		USB connector (Type-C) (plug) x 1 port	
Status display light	POWER	Lit when power is supplied	
	LAN	Wired LAN communication status display	
Power		DC 5V 3A	
External dimensions		Approx. 160 (W) x 54 (H) x 52 (D) mm	
Weight		Approx. 132 g	

⁽¹⁾ Connections through hubs or similar devices may not function properly. Therefore, we do not guarantee the performance of connections involving such devices.

* Note that the specifications and appearance may be changed without prior notice in order to improve the product.

* Illustrations used in this document are representations. Note that these may differ from the actual configuration, and that some parts may be omitted.

Contact

Contact your contracted WiMAX provider.

For UQ WiMAX contracts

[Contact via Web chat] (in Japanese only)

Easily get in touch anytime, anywhere using chat!

Our AI provides 24-hour support with quick responses, and our communicators provide detailed help.

<https://www.uqwimax.jp/chat/> (in Japanese only)



For contracts with WiMAX operators other than UQ WiMAX

See here for a list of providers

<https://www.uqwimax.jp/wimax/shoplist/mvno/> (in Japanese only)



With the aim of environmental conservation and the reuse of valuable resources, we collect and recycle telephones, batteries, and chargers no longer required by customers, regardless of brand or manufacturer, at stores displaying the ♻️ logo.



If the product is charged when wet, unusual overheating or damage by fire may occur, which is extremely dangerous.